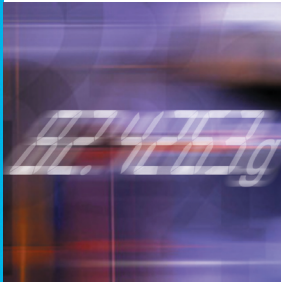


High-Precision Weigh Modules WM Designed for Automation



Fast

Split-second stabilization times even in harsh environments, 38 updates per second.



Rugged

Proven METTLER TOLEDO MonoBloc technology. FDA-approved stainless steel housing with smooth surface. Optional water and dust protection of IP66 for integration in wash-down applications. Built-in overload and torsion protection.



High precision

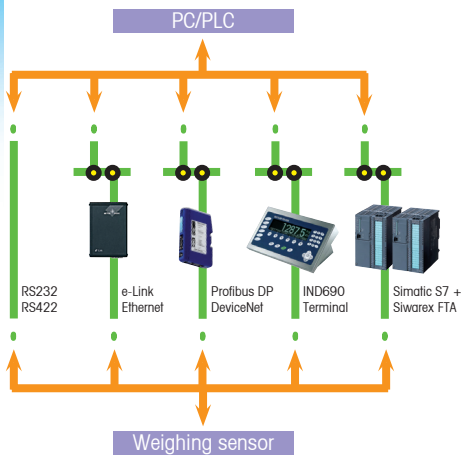
Accurate to 0.1 mg, even in industrial environments, state of the art signal processing. Adjustment with built-in or external adjustment weight.



Specially developed for use in automated processes.

A professional solution for new horizons in dispensing and weight determination.

The WM product line combines the precision and quality of high-tech weighing sensors with modular, easy-to-integrate design and flexible connectivity.



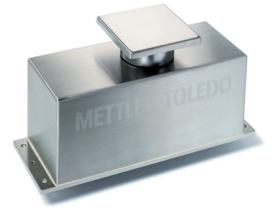
Direct

Direct data transfer via RS232 or RS422 to your PLC. Optional communication via accessory modules with Profibus DP, DeviceNet or Ethernet TCP/IP. Can be directly connected to SIWAREX FTA. Detailed documentation and commissioning software included.

WM line - the sum of all advantages:

- Weighing range from 120 g to 6 kg
- 0.1 mg readability (WM124)
- Directly connects to control systems
- Increased speed and accuracy of filling processes
- Optimized use of valuable materials
- Enhanced process safety
- Reduced cycle times
- Increased production volume
- Minimized downtimes

WM Weigh Module Specifications



| Model | WM124 | WM123 | WM503 | WM3002 | WM6002 |
|---|--------------|-------------|-------------|------------|------------|
| Maximum capacity | 121 g | 121 g | 510 g | 3100 g | 6100 g |
| Readability | 0.0001 g | 0.001 g | 0.001 g | 0.01 g | 0.01 g |
| Typical stabilization time *) | < 0.4 s | < 0.2 s | < 0.2 s | < 0.2 s | < 0.2 s |
| with required weighing tolerance of | 0.001 g | 0.01 g | 0.01 g | 0.1 g | 0.1 g |
| Linearity (10 ... 30 °C, typ.) | +/- 0.0004 g | +/- 0.001 g | +/- 0.002 g | +/- 0.03 g | +/- 0.04 g |
| Repeatability (s) (good conditions) | 0.0001 g | 0.001 g | 0.001 g | 0.01 g | 0.01 g |
| Dimensions of load plate (standard types) | Ø 45 mm | Ø 45 mm | Ø 55 mm | 80 x 80 mm | 80 x 80 mm |

*) Weighing time = stabilization time plus (adjustable) observation time

General technical data

| | |
|--------------------------------------|---|
| Dimensions of weighing module: | Length 240 mm; width 85 mm; height of platform above mounting surface 126 mm |
| Degree of protection: | IP54; IP66 in wash-down configuration |
| Operating temperature range: | + 10...30 °C |
| Allowable ambient temperature range: | + 5...40 °C |
| Data transmission rate: | Up to 38 updates per second |
| Data interfaces: | RS 232 and RS 422, direct connection - without terminal, Profibus DP, DeviceNet and Ethernet TCP/IP, with optional accessory modules |

Standard features

- Stainless steel housing
- Built-in overload protection
- Load plate with double-labyrinth seal
- Equipped for below-the-balance weighing
- Built-in adjustment weight
- Subtractive preload
- RS232 / RS422 interface
- Digital inputs/outputs
- Detailed operating instructions
- CD with configuration and visualization software

Accessories

- Various load plates
- Various connecting cables
- Connection modules (recommended)
- Profibus DP module
- DeviceNet module
- Ethernet TCP/IP module
- Digital displays
- Adjustment weights
- Level indicator
- Startup set

Options

- Wash-down configuration



Typical configurations

