

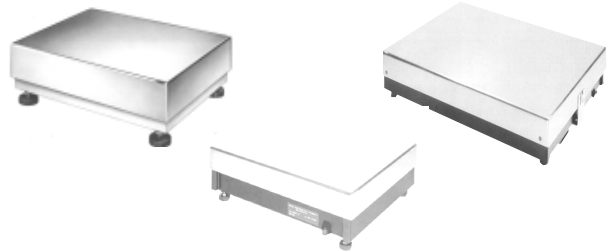
# Bench/Portable Scales

## KA-KB-KCC

### PLATFORMS (15 kg–300 kg)

The High Precision KA-KB-KCC K-bases give the highest reproducibility at capacities from 15 kg to 300 kg.

They come with the MonoBloc® load cell in a stainless steel enclosure and internal calibration weight. Platforms are available in 304 stainless steel and powder coated.



KA-KB-KCC Platforms

#### Applications

- OEM machinery
- Tank & hoppers
- Conveyors

#### Standard Features

- MonoBloc technology
- Measuring cell cable length 8 ft (2.5 m)
- IP67 protection
- Base and load plate

#### Specifications

##### Approvals:

NTEP, ISO9001, CE

##### Material:

Stainless steel and powder coated

##### Seal type:

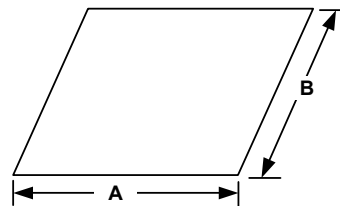
Environmentally protected, IP67

##### Ambient temperatures:

-14 to 104°F accuracy class III, 32 to 104°F accuracy class II

#### Dimensions (in inches)

	KA	KB	KCC
<b>A</b>	13.8"	20"	32"
<b>B</b>	11"	16"	24"



KA-KB-KCC Platforms

#### Bench and Stand Scales

Model	Order Number	Capacity/Readability (lb/g)	Dimensions (in./mm)	Construction: Load Plate/Base	Shipping Weight (lb/kg)
KA15s	504084	30 lb/0.0002 lb (15 kg/0.1 g)	13.8" x 11" (350 x 280 mm)	SS/SS	29 lb (13 kg)
KA32s	504653	70 lb/0.0002 lb (32 kg/0.1 g)	13.8" x 11" (350 x 280 mm)	SS/SS	29 lb (13 kg)
KB60.2	504778	120 lb/0.002 lb (60 kg/1 g)	20" x 16" (500 x 400 mm)	SS/BPC	77 lb (35 kg)
KB60s.2	504828	120 lb/0.002 lb (60 kg/1 g)	20" x 16" (500 x 400 mm)	SS/SS	77 lb (35 kg)
KCC150	504827	300 lb/0.002 lb (150 kg/1 g)	32" x 24" (800 x 600 mm)	SS/BPC	160 lb (72 kg)
KCC150s	504881	300 lb/0.002 lb (150 kg/1 g)	32" x 24" (800 x 600 mm)	SS/SS	160 lb (72 kg)
KCC300	504779	600 lb/0.005 lb (300 kg/2 g)	32" x 24" (800 x 600 mm)	SS/BPC	160 lb (72 kg)
KCC300s	504882	600 lb/0.005 lb (300 kg/2 g)	32" x 24" (800 x 600 mm)	SS/SS	160 lb (72 kg)

#### Bench and Stand Scales Accessories

For Model	Order Number	General Description	Const.
KB60.2	503631	Scale bench stands 22" high	BPC
KB60.2	503632	Scale bench stands 22" high	SS
KCC150/300	504853	Scale bench stands 22" high	BPC
KCC150/300	504854	Scale bench stands 22" high	SS
—	504127	Indicator support for bench stands 23" high	BPC
—	504128	Indicator support for bench stands 23" high	SS
—	503700	Stand base for mobile installation of floor stand	BPC
—	503701	Stand base for mobile installation of floor stand	SS

Note: SS = Stainless steel BPC = Black powder coat  
CS = Carbon steel HG = Hot dip galvanized

24 Stocked to ensure 24 hour delivery on up to 10 identical units.

bto Built to order product. Lead time is 2-3 weeks.

All other products are stocked to meet normal demand.

#### Bench and Stand Scales Accessories—Roller Tracks, Carts, and Terminal Stands

For Model	Order Number	General Description	Construction
KB60.2	503640	Roller track—dry environment	CS
KCC150/300	504852	Roller tracks—dry environment	CS
—	504131	ID terminal floor stand, 44" high	CS
—	504132	ID terminal floor stand, 44" high	SS

#### Accessories—Cables and Miscellaneous

Order Number	General Description
504134	<b>Measuring Cell Extension Cable.</b> Interconnects with existing cable. Provides a 33 ft (10 m) extension
504133	<b>Cable Adapter Kit.</b> Intended for use with 504177, when it is necessary to extend the measuring cell cable beyond 33 ft (10 m) maximum distance of extension 310 ft (94 m)
504177	<b>ID Net Cable/Foot—Maximum Distance = 310 ft (94 m).</b> Intended for use with 504133-cable adapter kit, when cable extension is required beyond 33 ft. For distances equal or less than 33 ft (10 m) use 504134 which is a complete cable.
bto 504122	<b>Converter/Power Supply for Weighing Platform GD12.</b> Conversion of scale interface IDNet into RS232C for connection of scale direct to PC
24 13864800A	<b>IDNet Adapter Harness.</b> Connection of K-Line, R/G/B's to <b>JAGUAR</b> when used with <b>JAGUAR</b> IDNet Interface module

