

## Batching Controller—DataVault™

Description	Specifications
PC Recommendations (minimum)	<ul style="list-style-type: none"> <li>• Pentium 75 with 16Mb Ram, 500Mb hard drive</li> <li>• Color monitor, Keyboard, and Mouse</li> <li>• 3 1/2 in floppy drive to load LynxBatch DataVault</li> </ul>
Operating System	<ul style="list-style-type: none"> <li>• Windows 95/98 or Windows NT4 Client</li> </ul>
LynxBatch Software	<ul style="list-style-type: none"> <li>• Requires LynxBatch revision D or higher</li> </ul>
Communications	<ul style="list-style-type: none"> <li>• RS-232 COM 1 or 2 port on PC for point-to-point connection</li> <li>• RS-485 COM 1 or 2 port on PC for multi-drop connection</li> </ul>
Project Management	<ul style="list-style-type: none"> <li>• Multiple project directories can be maintained on single PC</li> </ul>
System Functions	<ul style="list-style-type: none"> <li>• Communication parameter settings</li> <li>• Scale capacity and readability settings</li> <li>• Scale selection by name</li> </ul>
Recipe Functions	<ul style="list-style-type: none"> <li>• Off-line creation and editing of recipe files</li> <li>• Up and download of recipes from / to LynxBatch(s)</li> <li>• Load LynxBatch recipe selection registers from PC</li> </ul>
Material Functions	<ul style="list-style-type: none"> <li>• Off-line creation and editing of material files</li> <li>• Up and download of materials from / to LynxBatch(s)</li> <li>• Inventory and usage records per material</li> </ul>
Process Monitoring	<ul style="list-style-type: none"> <li>• Display LynxBatch status</li> <li>• Display LynxBatch scale data</li> </ul>
Printing	<ul style="list-style-type: none"> <li>• Recipe file listings</li> <li>• Material file listing</li> </ul>

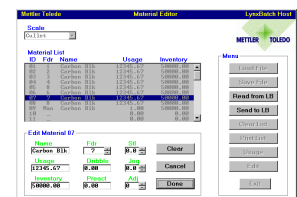
Features	Benefits
PC Data Storage	<ul style="list-style-type: none"> <li>■ Provides a convenient way to store data</li> <li>■ Enables secure backup of vital data for quick recovery</li> <li>■ Many recipes can be stored</li> <li>■ Recipes easily copied from/to LynxBatch(s)</li> </ul>
PC Editing	<ul style="list-style-type: none"> <li>■ Eases creation and editing using PC keyboard/monitor</li> <li>■ Improves accuracy and reduces editing time</li> <li>■ Simple and familiar Window's type program navigation</li> <li>■ Range and precision sensitivity to scale calibration</li> <li>■ Prompts user with valid entries for data fields</li> </ul>
On-Line Help	<ul style="list-style-type: none"> <li>■ Extensive context-sensitive, on-line help system</li> </ul>
Multi-Drop Networking	<ul style="list-style-type: none"> <li>■ Permits connection of multiple LynxBatch</li> <li>■ Permits supervisor management of data from central location</li> </ul>

Contact LSI Scales & Systems at 800-453-7232 or at [www.lacrossescale.com](http://www.lacrossescale.com) for further information.

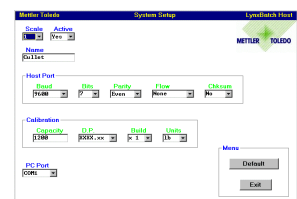
Produced in a Facility that is



## Recipe and Material Management, Monitoring



## Familiar Windows Program Style



## Improves Data Management Productivity and Security