

Load Cell



DigitOL® POWERCELL®

Vehicle Scale Load Cell With
Built-In Microprocessor



**Accurate, Stable, Top Performing Load Cell
With Full Digital Output**

METTLER TOLEDO



Built-In Microprocessor Continuously Monitors Load Cell Performance



DigiTOL® POWERCELL® Load Cells Automatically Correct for Errors

The digital technology employed in each hermetically sealed (NEMA 6P / IP 68) DigiTOL POWERCELL provides inherently better performance than conventional analog load cells. A microprocessor built into DigiTOL POWERCELL load cells continuously monitors cell performance and automatically corrects for errors caused by creep, low voltage analog signals, radio frequency interference (RFI), moisture and corrosion, off-center loads, nonlinearity, hysteresis and temperature changes. Built-in diagnostics simplify service and maintenance. A POWERCELL load cell regularly "take its own pulse." It's like having a scale technician monitor your scale 15 times a second, 24 hours a day!

Built-In Microprocessor Contains "Library"

During manufacture, powerful computers collect and process data that are summarized into a unique, compact "library" in the memory of the microprocessor contained within each POWERCELL load cell. This enables the POWERCELL to behave as if it had the intelligence of the much larger, more powerful computer used in its manufacture.

Corrected weight information is in true digital form. This eliminates the errors caused by analog load cells as their weak signals pass through connectors, cables and amplifiers. Unlike analog load cells, POWERCELL load cells transmit a powerful signal...about six million times stronger than analog signals. And they are far more resistant to problems caused by lightning.

Lightning Protection

Mettler Toledo's StrikeShield™ independent-lab-tested lightning protection system consists of equipment designed specifically to eliminate damage to POWERCELL load cells and instrumentation as a result of lightning strikes. It's backed by a five-year limited warranty... but it's more than just a very good warranty: it really protects.

Proven Performance

Capacities are 22,5t / 50k, 45t / 100k, and 90t / 200k. Over 250,000 POWERCELL load cells are in use worldwide. This represents the largest installed base of digital heavy industrial load cells in the world.

Less Downtime

Downtime can be very costly. It's not just the expense of getting a scale back up and running. It's the value of the product that doesn't get weighed that can really hurt. The diagnostic capabilities in the DigiTOL POWERCELL greatly reduce downtime.

Approvals

The POWERCELL load cell is approved by the National Institute of Standards Handbook 44. Certificate of Conformance Number 88-091 was issued under the National Type Evaluation Program (NTEP). Test Certificate TC2149 was issued in Europe, and S252A in Australia. Also Ex-94.C.101 (Issued by CESI). Approved by Factory Mutual under FM Project Number OV4A2.AX.

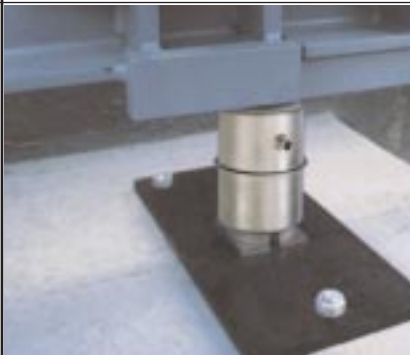


ISO 9001

This product was developed, produced and tested in a METTLER TOLEDO facility that has been audited and registered according to international (ISO 9001) quality standards.

For more information on the POWERCELL load cell, call your METTLER TOLEDO office or nearest authorized distributor. Or visit our web site: www.mt.com.

Easy access to the POWERCELL load cell.



METTLER TOLEDO

USA & Canada
1900 Polaris Parkway
Columbus, Ohio 43240

TEL. (800) 786-0038
(614) 438-4511
FAX (614) 438-4900

Headquarters
8606 Greifensee
Switzerland

TEL. (41-1) 944 22 11
FAX (41-1) 944 30 60

	TEL	FAX
Australia	(61) 3 9644 5700	(61) 3 9645 3935
Austria	(43-1) 604 1980	(43-1) 604 2880
Belgium	(32-2) 334 0211	(32-2) 378 1665
Brazil	(55-11) 421 5737	(55-11) 7295-1692
China (Industrial)	(86-519) 6642040	(86-519) 6641991
China (Systems)	(86-21) 6485-0435	(86-21) 6485-3351
Croatia	(385-1) 660 3009	(385-1) 660 2189*
Czech Republic	(420-2) 254962	(420-2) 24247583
Denmark	(45-43) 27 08 00	(45-43) 27 08 28
France	(33-1) 30 97 17 17	(33-1) 30 97 16 16
Germany	(49-641) 50 70	(49-641) 52951
Hungary	(36) 1257 7030	(36) 1256 2175
India	(91-22) 857-0808	(91-22) 857-5071
Italy	(39-2) 333321	(39-2) 356-2973
Japan	(81-6) 949-5901	(81-6) 949-5944
Kazakhstan	(7-3272) 50 63 69	(7-3272) 60 88 35

	TEL	FAX
Korea	(82-2) 518-2004	(82-2) 518-0813
Malaysia	(60-3) 703 2773	(60-3) 703 8773
Mexico	(52-5) 547 5700	(52-5) 541 2228
Netherlands	(31-344) 638363	(31-344) 638390
Norway	(47-22) 30 44 90	(47-22) 32 70 02
Poland	(48-22) 651 9232	(48-22) 42 20 01
Russia	(7-095) 921 9211	(7-095) 921 6353
Singapore	(65) 778 6779	(65) 778 6639
Slovak Republic	(421-7) 525 2170	(421-7) 525 2173
Slovenia	(38-6) 6123-57 64	(38-6) 6127-4575*
Spain	(34-3) 223 2222	(34-3) 223 0271
Sweden	(46-8) 702 50 00	(46-8) 642 45 62
Switzerland	(41-1) 944 45 45	(41-1) 944 45 10
Taiwan	(886-2) 579-5955	(886-2) 579-5977
Thailand	(66-2) 719 6480	(66-2) 719 6479
United Kingdom	(44-116) 235 7070	(44-116) 236 6399

Internet
www.na.mt.com
www.mt.com

Specifications subject to change without notice.
© 1999 Mettler-Toledo, Inc.

METTLER TOLEDO®, DigiTOL®, POWERCELL® and StrikeShield are trademarks of Mettler-Toledo, Inc. Printed on recycled paper and is recyclable. Printed in USA.

??M0699
TRUCK SCALES
199-GL03184.0E

*Ask for FAX.