

Stainless Steel Bench Scale with Hermetically Sealed Load Cells

Specifications	WHN 006B	WHN 015B	WHN 030B	WHN 060B	WHN 060L	WHN 150B
Maximum Capacity	6 kg/15 lb	15 kg/30 lb	30 kg/60 lb	60 kg/150 lb		150 kg/300 lb
Minimum Graduation (eMIN)	0.001 kg/ 0.002 lb	0.002 kg/ 0.005 lb	0.005 kg/ 0.01 lb	0.01 kg/ 0.02 lb		0.02 kg/ 0.05 lb
Readability Non-Legal-for-Trade at Maximum Capacity	0.0005 kg/ 0.001 lb	0.001 kg/ 0.002 lb	0.002 kg/ 0.005 lb	0.005 kg/ 0.01 lb		0.01 kg/ 0.02 lb
Recommended Legal-for-Trade Build (NTEP)	5 x 0.001 kg/ 10 x 0.002 lb	10 x 0.002 kg/ 25 x 0.005 lb	25 x 0.005 kg/ 50 x 0.01 lb	50 x 0.01 kg/ 100 x 0.02 lb		100 x 0.02 kg/ 250 x 0.05 lb
Recommended Legal-for-Trade Build (OIML)	6 x 0.002 kg	15 x 0.005 kg	30 x 0.01 kg	60 x 0.02 kg		150 x 0.05 kg
Maximum Back Weight *	9 kg/25 lb	3 kg/7 lb	16 kg/35 lb	36 kg/80 lb	27 kg/60 lb	54 kg/120 lb
Static Overload**	60 kg/130 lb	180 kg/395 lb			450 kg/990 lb	
Resolution	Up to 5,000 divisions (NTEP) Legal-for-Trade / Up to 10,000 divisions non-Legal-for-Trade					
Load Cell Capacity	20 kg/45 kg		50 kg/110 lb	100 kg/220 lb		200 kg/440 lb
Base Dimensions (w x d)	229 x 229 x 92 mm/ 9 x 9 x 3.6 in		305 x 305 x 98 mm/ 12 x 12 x 3.9 in			457 x 457 x 118 mm/ 18 x 18 x 4.7 in
Net Weight	5 kg/11 lb		8 kg/18 lb			22 kg/49 lb
Shipping Weight	8 kg/17 lb		12 kg/26 lb			26 kg/57 lb
Load Cell Type	Analog - single 350 ohm load cell, 2 mV/V					
Load Cell Cable	3 m/10 ft					
Load Cell Protection	Hermetically sealed					
Construction	304 Stainless steel frame/304 stainless steel platter/17-4 stainless steel load cell					
Operating Temperature	-10°C to 40° C (14°F to 104°F); 10 to 95% humidity					
Storage Temperature	-40°C to 140° C (-40°F to 60°F); 10 to 95% humidity					
Recommended METTLER TOLEDO Terminals	PANTHER®, LYNX®, JAGUAR®, JAGXTREME®, ID1 or ID7 (with analog scale card), and LYNXBATCH®					

* Back weight based on recommended Legal-for-Trade build.

** Maximum non-shock overload that can be placed on the base without affecting the structural integrity of the base.

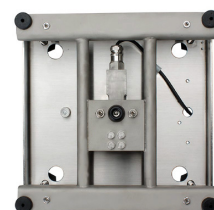
Options:

- For integration with a column and terminal, order as TRIMWEIGH III

Features	Benefits
Washdown construction	<ul style="list-style-type: none"> ■ Hermetic load cell for protection against moisture in the most extreme washdown and condensing environments; easy to clean and sanitize ■ 100% stainless steel construction, including load cell ■ Removable platter for easy cleaning ■ Drain holes in base to eliminate water retention
Low profile	■ Easy to integrate into working environment
Overload protection	■ Six physical overload stops
Adjustable feet	■ Easy to level the scale on uneven surfaces

Contact your local METTLER TOLEDO authorized distributor or sales office for further information. Or visit our website: www.mt.com/industrial.

For Heavy Washdown and High Humidity Environments



Produced in a Facility that is

