



Excellence Plus XP

The new precision balance from METTLER TOLEDO.

Full Compliance

High Productivity

Amazing Solutions

That's the weigh!

**Guided by colors?
Certainly.**

METTLER TOLEDO

Excellence Plus XP

Precision Balances

High resolution precision balances

Unique combination of the highest capacities with the finest resolutions



MonoBloc^{HighSpeed}

Latest generation, rugged high-performance weigh cell for peak weighing performance.



SmartScreen

Large, colored touchscreen display. User guided by color for maximum security. Simple, user-friendly touchscreen operation.



QM Toolbox

Maximum security in regulated environments

- Eight user profiles with individual access rights
- Management of users with administrator profile
- Password protection
- Full traceability
- Seamless documentation with four ID's



MinWeigh

Warns if the weight is below the allowed minimum.



proFACT

Fully automatic time- and temperature-controlled adjustment.



SmartSens and ErgoSens

For hands-free operation.



IP54 inUse

Protection against dust and water.



Connectivity

Complete flexibility through six different interface options. Including wireless Bluetooth and Ethernet.

ErgoSens

Freely placeable, individually configurable – for hands-free operation of the XP from a distance.

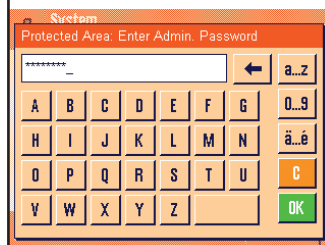
Full Compliance

For safe routine operation in QM-regulated environments



User Management

Individual access rights for eight users. Management of users with administrator profile.



Password protection

Ensure security with alpha numeric password protection. The settings of each user can be protected from unwanted changes.



Change History

Who changed which settings when? The Change History knows it all.

For more information visit
www.mt.com/XP

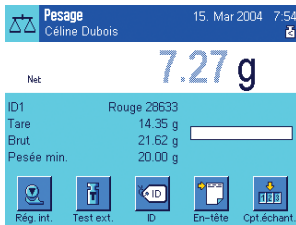


High Productivity

MinWeigh for full process security. Faster, more precise results with MonoBloc^{HighSpeed}

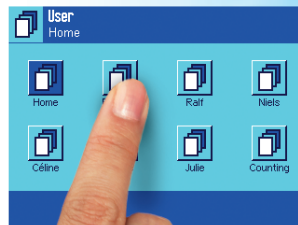
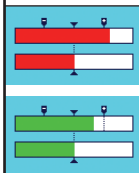
MinWeigh

Warns if the weight is below the allowed minimum. Ensures process security.



Weighing-in aid

Fast and safe weighing-in with instructions in red and green.



TouchScreen

Easy operation – select a name and the user profile is activated.



Amazing Solutions

Flexible balances and comprehensive accessories for perfect solutions



Stand

To save space the Terminal can be mounted on a special stand.



Connection guaranteed

Six different interfaces are supported in addition to the built-in RS-232 interface.



IP54 InUse

Sealed interfaces and secured power cable keep dust and water out.



Balance Model	XP203S	XP603S	XP603SDR	XP1203S
Maximum capacity	210 g	610 g	610 g	1210 g
Maximum capacity, fine range	-	-	120 g	-
Readability	1 mg	1 mg	10 mg	1 mg
Readability, fine range	-	-	1 mg	-
Linearity	2 mg	2 mg	10 mg	2 mg
Weighing time typical	1.5 s	1.5 s	1.5 s	1.5 s
Balance dimensions (WxDxH mm)	194x392x96	194x392x96	194x392x96	194x392x96
Usable height of draft shield (mm)	175	175	175	175
Weighing pan dimensions (WxD mm)	127x127	127x127	127x127	127x127
Bridge, stands alone	X203S	X603S	X603SDR	X1203S



Balance Model	XP1202S	XP4002S	XP6002S	XP6002SDR	XP8002S	XP10002S	XP10002SDR
Maximum capacity	1210 g	4100 g	6100 g	6100 g	8100 g	10100 g	10100 g
Maximum capacity, fine range	-	-	-	1200 g	-	-	2000 g
Readability	10 mg	10 mg	10 mg	100 mg	10 mg	10 mg	100 mg
Readability, fine range	-	-	-	10 mg	-	-	10 mg
Linearity	20 mg	20 mg	20 mg	100 mg	20 mg	20 mg	100 mg
Weighing time typical	1.2 s	1.2 s	1.2 s	1.2 s	1.5 s	1.5 s	1.5 s
Balance dimensions (WxDxH mm)	194x392x96	194x392x96	194x392x96	194x392x96	194x392x96	194x392x96	194x392x96
Usable height of draft shield (mm)	-	-	-	-	-	-	-
Weighing pan dimensions (WxD mm)	170x205	170x205	170x205	170x205	170x205	170x205	170x205
Bridge, stands alone	X1202S	X4002S	X6002S	X6002SDR	X8002S	X10002S	X10002SDR



Balance Model	XP4001S	XP6001S	XP8001S	XP10001S
Maximum capacity	4100 g	6100 g	8100 g	10100 g
Maximum capacity, fine range	-	-	-	-
Readability	100 mg	100 mg	100 mg	100 mg
Readability, fine range	-	-	-	-
Linearity	100 mg	100 mg	100 mg	100 mg
Weighing time typical	0.8 s	0.8 s	1.0 s	1.0 s
Balance dimensions (WxDxH mm)	194x392x96	194x392x96	194x392x96	194x392x96
Usable height of draft shield (mm)	-	-	-	-
Weighing pan dimensions (WxD mm)	190x223	190x223	190x223	190x223
Bridge, stands alone	X4001S	X6001S	X8001S	X10001S

Standard equipment

- SmartScreen, graphical color display with touchscreen operation
- SmartSens, two sensors for hands-free operation of the balance
- StatusBar, two displays for visualization of the SmartSens functionality
- proFACT, fully automatic temperature and/or time-controlled internal adjustment
- Weighing pan made from stainless steel, with draft ring or draft shield depending on resolution
- Spring-loaded stabilizing feet for all 0.1 g and 0.01 g models
- Built-in RS232 interface, slot for second freely selectable interface and two switch contacts
- Protective cover for terminal and weighing platform
- Feedthrough for below-the-balance weighing
- Power supply with AC/DC adapter
- Country-specific power cable
- Weighing adapter for optimal adaptation to the environment
- Production certificate for equipment qualification

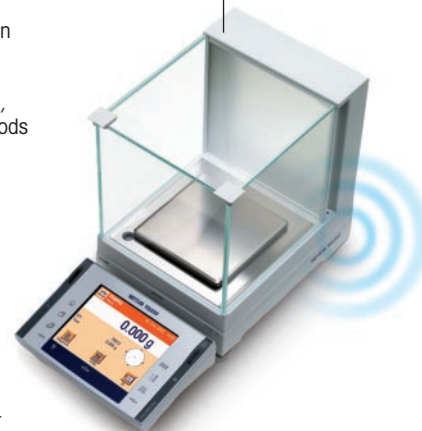
All models can

- Download software via the Internet
- Display different weighing units
- Tare over the entire weighing range
- Adapt to the environment
- Adapt to the weighing type
- Display statistics with \pm , % display
- Count with reference optimization
- Formula weighing, including security protection
- Factor calculation
- Manage users with password protection
- Change History/Adjustment History
- Schedule balance checks
- Notify minimum weight with MinWeigh, determined according to different methods
- Operate hands-free, including visual and acoustic feedback
- Alphanumeric identification
- 4 IDs per sample
- Communicate in seven languages: e, d, f, i, sp, russ, jap

Bluetooth Printer BT-P42



Possible at last: a wireless connection between balance and printer. Place the printer just wherever you want it –no cable to clutter your bench top!



Quality certificate ISO9001
 Environmental certificate ISO14001
 Internet: www.mt.com
 Worldwide service

Subject to technical changes
 © 03/2004 Mettler-Toledo GmbH
 Printed in Switzerland 11795419
 MCG MarCom Greifensee