

# Weighing Terminals



**IND780**

Connectivity

Communications

Customized Solutions

**Power and Performance**  
for Advanced Weighing Applications

**METTLER TOLEDO**

# Powerful performance increases productivity

## Flexible options reduce operating costs

- **Connectivity for multiple sensor technologies, networking, PLCs, and much more**
- **Communications from basic serial protocols up to custom PLC data templates**
- **Customized solutions using basic functionality, optional applications, or the TaskExpert™ programming tool**



### Minimize Operating Costs



- Scalable platform allows you to configure the exact product for the application.
  - Select combinations of METTLER TOLEDO technologies: Analog, POWERCELL™, IDNet, or X-Base (SICS).
  - Standard with Ethernet, two Serial ports, and a USB Master for an external keyboard.
  - Fieldbus connectivity using popular networking protocols: Allen-Bradley RIO®, PROFIBUS®, ControlNet™, EtherNet/IP™, and DeviceNet™.
- Use TraxEMT™ Embedded Maintenance Technician as a preventative strategy to predict and plan scale maintenance rather than react after a scale is already down.

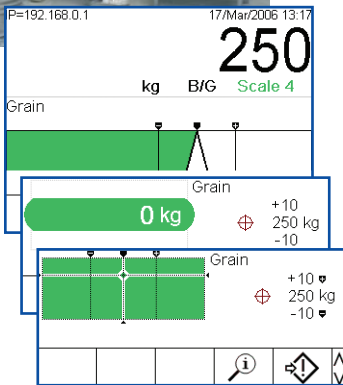


### Maximize Productivity



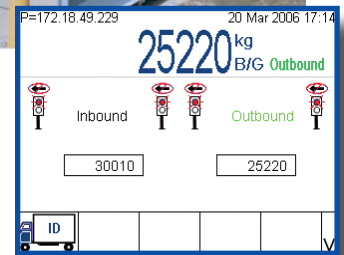
- Optimize the amount of visible information with the QVGA graphical LCD display, available in monochrome or Active TFT Color, to further enhance the visual display of information and status.
- Configure up to four concurrent scales and a metrologically approved sum scale, then view one or all on the display at the same time.
- Improve the speed and accuracy of manual or semi-automatic operations with SmartTrac™. This feature offers three display modes to graphically show weight status to target.
- Increase throughput with the IND780 multi-processor design, providing the fastest A/D performance at 366 Hz. Includes TraxDSP™ digital filtering for the roughest weighing environments.
- Configurable softkeys allow for single key press operation of important features and functions.
- Applications with strict cleaning requirements will benefit from 304 Stainless Steel construction, sanitary finishes, and other food and pharmaceutical industry supported features.

**IND780 is well equipped for both transactional and process weighing applications in many industries.**



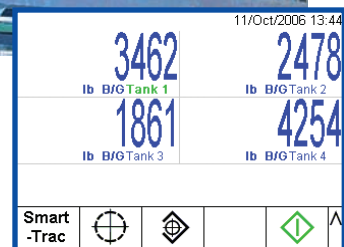
### Transaction

- Single or multiple platform weighing including tare data and metrological sum all on one display.
- Transmission of multiple fields and formats of data to printers, scoreboards, or data collection devices using Serial and/or Ethernet data protocols.
- Manual filling or adding of ingredients using one of three Smart-Trac™ graphical displays.
- Validated precision weighing with programmable MinWeigh® minimum weight threshold.
- Drive-780 vehicle application offers user-defined tables, traffic light/gate control and the ability to integrate target control and vehicle weighing.

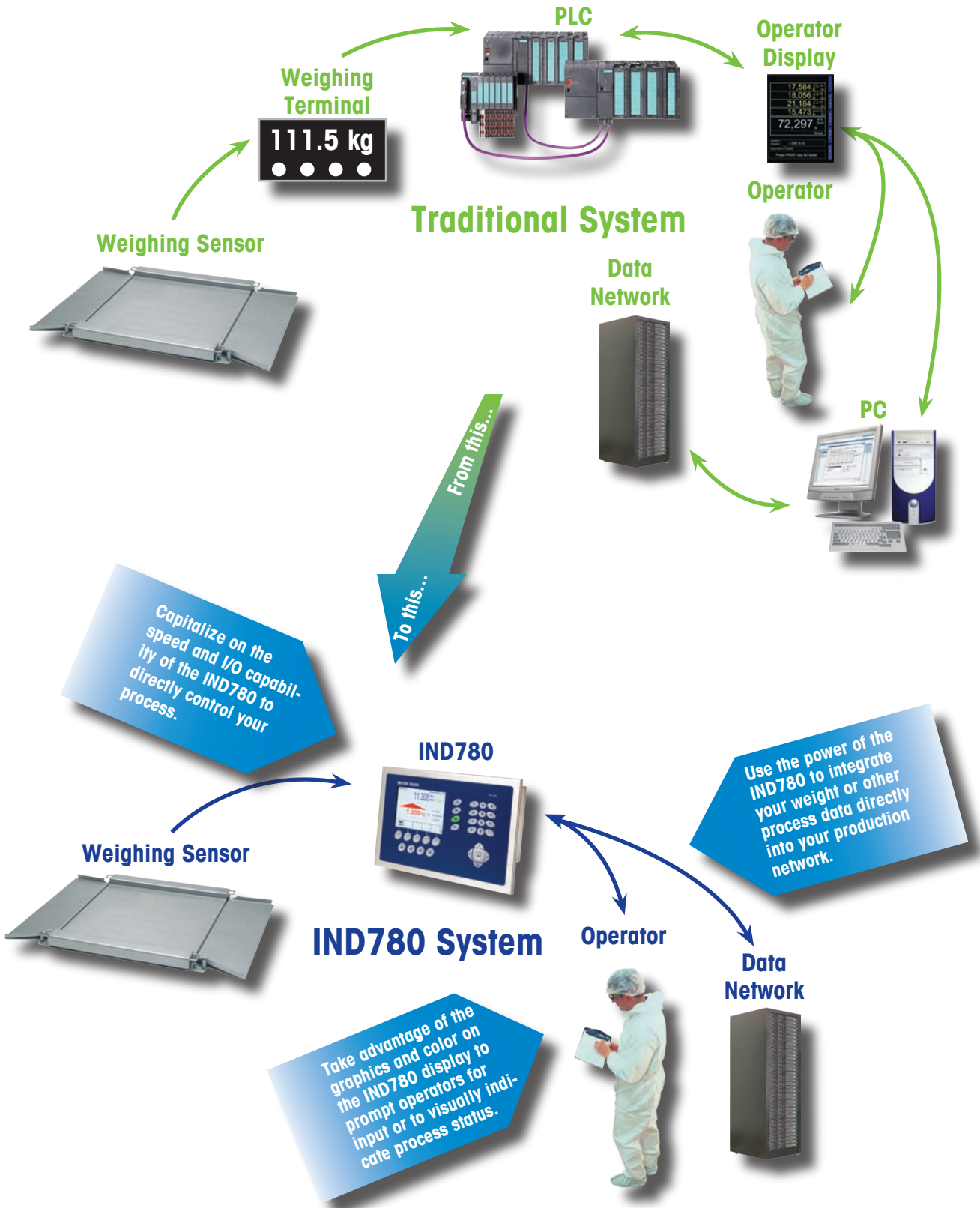


### Process

- True multi-tasking capability allows weigh-in or weigh-out sequences utilizing 2-speed feed on all 4 scales simultaneously.
- Integrated display of current weight and rate data for each scale.
- Powerful PLC communications capability including custom templating of data strings.
- Control up to 40 inputs and 56 outputs using optional internal or external modules.
- Two enclosure types withstand a wide range of environments and installation locations: IP69K Harsh or Type 4/12 Panel Mount.

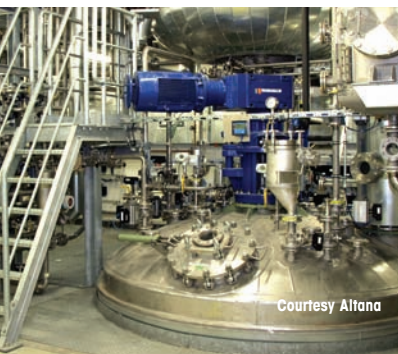
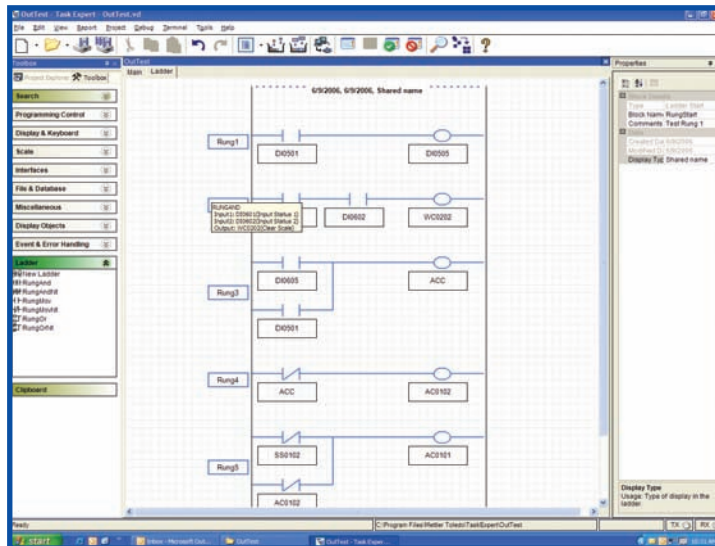
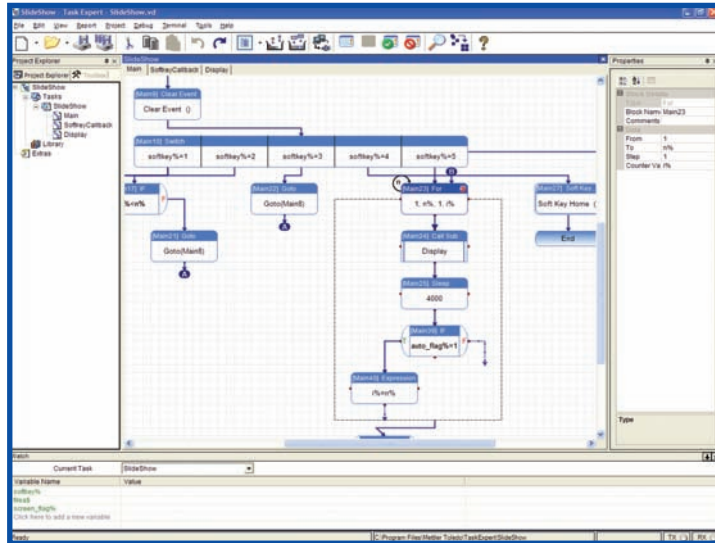


Move beyond traditional transaction and process weighing applications and develop true total control solutions with the IND780 system.



## Use the TaskExpert™ graphical programming environment to build on standard IND780 applications or develop your own custom applications

- The TaskExpert programming tool is a flowchart-based system that eliminates the need to learn complex line-oriented programming languages
  - ❑ Just drag, drop, and configure function blocks to build your program
  - ❑ Read and interact with over 2,400 Shared Data variables within the IND780
  - ❑ Includes a built-in Ladder Logic engine for easy I/O handling scenarios
  - ❑ Design your own user interface display within your TaskExpert program using text, softkeys, and graphics
  - ❑ Manage relational databases with SQL Server 2000 Windows CE Edition functionality



## Delivering Complete Service Efficiency To Your Operations

IND780 includes a comprehensive suite of advanced tools to optimize performance, increase uptime and lower lifecycle costs.

IND780 Feature	Asset Management Benefit
<ul style="list-style-type: none"> <li>InSite™ PC-based configuration</li> </ul>	<ul style="list-style-type: none"> <li>Connected or off-line configuration saves time and permits easy “cloning” of setup</li> <li>Document and archive setup for secure backup and restoration</li> </ul>
<ul style="list-style-type: none"> <li>Built-in testing and diagnostics</li> </ul>	<ul style="list-style-type: none"> <li>Test operation and I/O to confirm functionality prior to use</li> <li>Minimize downtime when an operational abnormality occurs</li> </ul>
<ul style="list-style-type: none"> <li>Calibration tools and management</li> </ul>	<ul style="list-style-type: none"> <li>Calibration approaches that fit your application and precision requirements</li> <li>Automate calibration test procedures to ensure adherence to SOPs</li> </ul>
<ul style="list-style-type: none"> <li>TraxEMT™ Embedded Maintenance Technician</li> </ul>	<ul style="list-style-type: none"> <li>Predictive alerts and automatic email notification when service is required</li> <li>Maintenance/error logging tracks terminal and user performance</li> </ul>

METTER TOLEDO service technicians are factory trained to maximize return on your equipment investment, each step of the way. ServiceXXL tailors the right combination of services for your business success.

Service Event	ServiceXXL Delivers
<ul style="list-style-type: none"> <li>Installation and configuration</li> </ul>	<ul style="list-style-type: none"> <li>Equipment ready-to-run on schedule</li> <li>Setup optimized to your application</li> <li>Seamless integration with other systems</li> </ul>
<ul style="list-style-type: none"> <li>Equipment Qualification</li> </ul>	<ul style="list-style-type: none"> <li>Compliance with requirements</li> <li>Quality system documentation</li> </ul>
<ul style="list-style-type: none"> <li>Calibration</li> </ul>	<ul style="list-style-type: none"> <li>Calibration using factory procedures</li> <li>ISO17025 Accredited Certification</li> <li>Measurement uncertainty determination</li> </ul>
<ul style="list-style-type: none"> <li>Proactive Maintenance</li> </ul>	<ul style="list-style-type: none"> <li>Control of maintenance budgets</li> <li>Improved equipment performance</li> <li>Asset lifecycle management</li> </ul>

**Mettler-Toledo, Inc.**  
 1900 Polaris Parkway,  
 Columbus, OH 43240  
 Tel. (800) 786-0038 / (614) 438-4511  
 Fax (614) 438 4900

**Mettler-Toledo AG**  
 PO Box VI-400, CH-8606  
 Greifensee, Switzerland  
 Tel. +41-44-944 22 11  
 Fax +41-44-944 31 70

METTLER TOLEDO® is a registered trademark of Mettler-Toledo Inc. All other brand of product names are trademarks of their respective companies.

Subject to technical changes  
 ©2006 Mettler-Toledo Inc.  
 Printed in USA  
 MarCom MTWT

IN03456.0E

[www.mt.com](http://www.mt.com)

Visit for more information



**Quality certification.** Development, production, and auditing in accordance with ISO9001. Environmental management system in accordance with ISO14001.

**ServiceXXL®**  
 Tailored Services

**Tailored Services.** Our extensive service network is among the best in the world and ensures maximum availability and service life of your product.



**Conformité Européenne**  
 This label is your guarantee that our products conform to the latest guidelines.