

DeviceNet-Module

Weighing Sensors and DeviceNet



Simple

Auto-detection of interface parameters and DIN-rail mountable module for fast commissioning.



Efficient

Basic Mode - weighing sensor data transfer with minimum effort. Extended Mode - unlimited communication including parameterization from the PLC for all compatible sensors and balances.



Direct and Flexible

Easily connects weighing sensors to DeviceNet - with minimal programming effort. Compatibility with METTLER TOLEDO weighing sensors with a RS232, RS422 or RS485 interface and MT-SICS protocol.



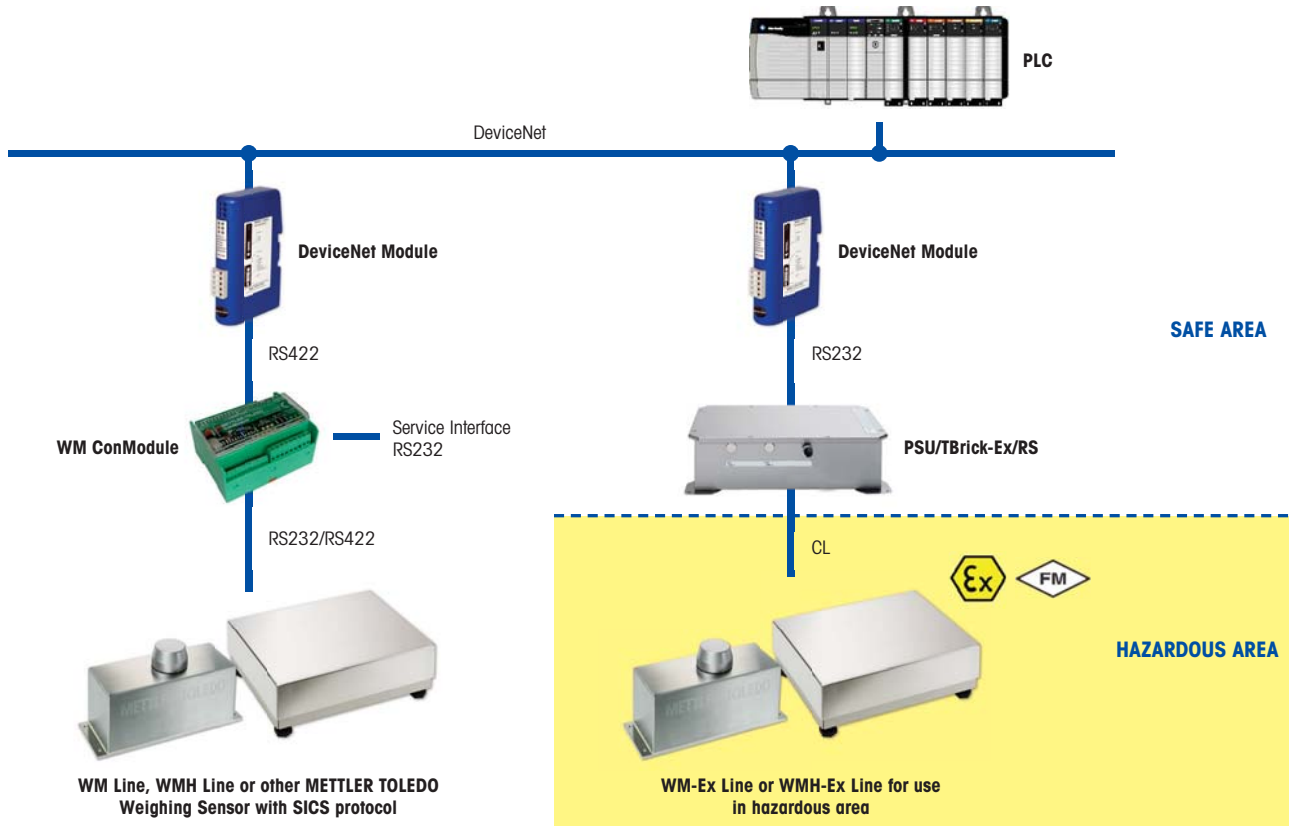
Interfaces	DeviceNet baud rates: 125 or 250 or 500 kbit/s Communication with slave: RS232, RS422, up to 57.6 kbit/s, auto-detection of interface parameters
Connectors	Scale: SUB D9 female DeviceNet: Terminal block with 5 connectors Supply voltage: Terminal block with 2 connectors
Address Range	Mac ID 0-63
EDS-File	MT_DEV.eds
Dimensions	120 mm x 75 mm x 27 mm / 4.7 in x 2.9 in x 1.1 in
Power Supply	24 V DC \pm 10% / typically 100 mA
Protection	IP20
Temperature	0 to 40 °C / 32 °F to 104 °F
Weight Value	Single floating point number according to IEEE 754 (Motorola word)
Included in Delivery	DeviceNet-Module including configuration software, configuration cable, detailed instruction and installation manual
Compatibility	WM/WMH Weighing Modules, SAG Weighing Modules, LCS Load Cell Sets, WK Weighing Kits, AB-S/AG/AX/MX/PB-S/PG-S/PL-S/PR/SB/SG/SR/UMX/XS/XP Laboratory and Micro Balances, Viper/Spider Balances and HB/HG/HR Moisture Analyzers

METTLER TOLEDO



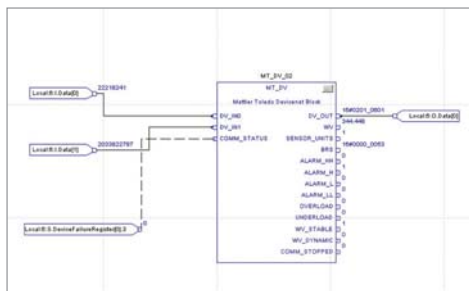
Fast, Convenient and Risk-Free Integration of Weighing Sensors in Rockwell Automation Logix5000

As of RSLogix5000 Version 16, a complimentary open-source Rockwell Automation Logix5000 function block and faceplates specific to METTLER TOLEDO products with SICS communication protocol will be available. They will significantly shorten integration time and save valuable resources and development time for system integrators and end users.



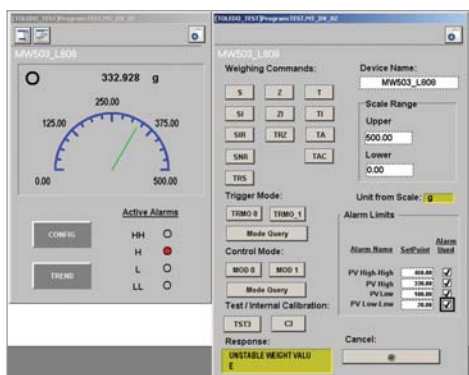
WM Line, WMH Line or other METTLER TOLEDO Weighing Sensor with SICS protocol

WM-Ex Line or WMH-Ex Line for use in hazardous area



Function Block and Faceplates

- Three ready-to-use faceplates
- Compatible with RSLogix5000 Version 16 and RSView
- Can directly be used in Function Block Diagram, Ladder Logic and Structure Text
- Developed and tested by RA and MT
- Open source
- Complimentary
- Download latest version at www.rockwellautomation.com/knowledgebase



Benefits

- Saves significant development time
- Versatile and customizable
- Less risks
- Project-wide consistency